



BESPOKE TEAMWEAR SOLUTIONS

HOCKEY



### **A GROWING REPUTATION**

Welcome to Team MKK and our latest sportswear brochure.

Since we set up MKK Sports in 2005, the company has continued to grow in reputation and stature within the sportswear market. However, without the invaluable support of our loyal customers, we know we would still be on the bench.

Over the past three years, MKK has supplied the finest quality sportswear to a large number of high-profile customers, including sports clubs, schools, colleges and corporate organisations. We are the official teamwear suppliers to Sussex CCC and 2008 Twenty20 Champions, Middlesex CCC, and have supplied teamwear to the Great Britain Davis Cup squad.

### **COMMITTED TO SPORT**

MKK loves sport. That's why we have taken significant time and effort to create what, we believe, is the finest-quality bespoke sportswear available on the market today. We use professionals to road-test our gear which is why we can be confident in that claim. Sussex and England cricketer, James Kirtley is part of our team and, by using his experience as a professional sportsman, we understand what players need and look for when choosing their kit.

### **BUILDING STRONG TEAM IDENTITY**

In modern competitive sport, the idea of creating a strong team identity is becoming increasingly important. We understand this trend and that's why our dedicated sales team will work closely with you to create a unique clothing range that helps you create a professional image on and off the pitch.

### **BESPOKE PRODUCTS, BESPOKE SERVICE**

The bespoke nature of our business means that you are in charge every step of the way. Just tell us what you would like to include in your team's sportswear range and we will do our utmost to meet your requirements.

We offer a personal, bespoke service from the first phone call to the point when your order arrives, and we treat all our customers the same, whether you are a school, Club team, county side or national squad.

Our aim is simple - to provide our customers with the finest-quality sportswear competitively priced when we say we will, and offer an unrivalled service that we believe, cannot be matched.



## CONTENTS

Menswear Fit Guide	4
Womenswear Fit Guide	5
Youth Fit Guide	6
Bespoke Kit - Shirts, Vests, Shorts & Skorts	9
Stock & Semi Bespoke MKK Coloured Kit	10
Stock & Semi Bespoke MKK Training Kit	11
Stock & Semi Bespoke MKK Training Kit	13
Fabric Descriptions	15



## MENSWEAR FIT GUIDE

Please follow our How to Measure instructions and our clothing Size Guides below to find out the correct size to order. If your body measurements are at the upper end of those specified or you prefer a looser fit, we recommend you order a larger size.

### HOW TO MEASURE

All body measurements should be taken standing in a relaxed posture, without clothing and with the tape measure held comfortably around the body.

### NECK

Measure around the base of the neck where a shirt collar would naturally sit.

### CHEST

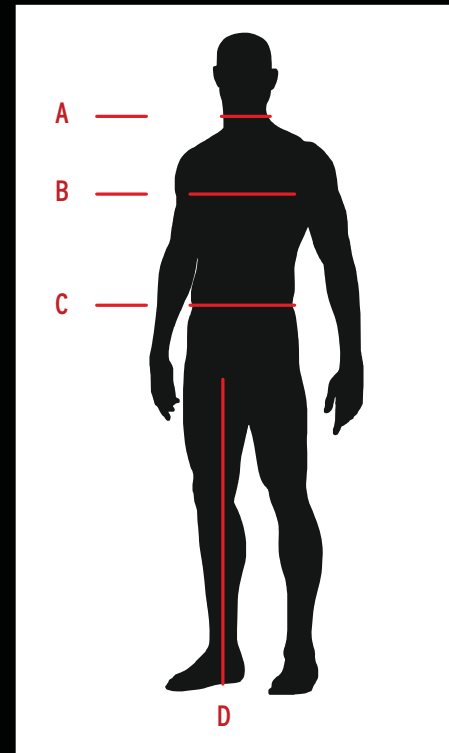
Measure the chest around the fullest part, placing the tape measure loosely under the armpits and over the shoulder blades at the back.

### WAIST

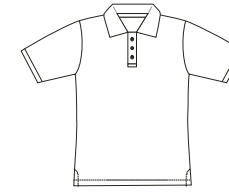
Measure around the natural waist, with the tape measure held level around the body. The natural waist is approximately 4cm above the small of the back.

### INSIDE LEG

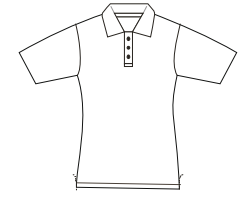
Measure in a straight line from the centre of the crotch to where your trousers finish wearing a training shoe.



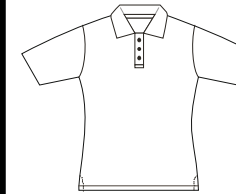
### MENS REGULAR FIT



### MENS TIGHT FIT



### MENS SLIM FIT



## SIZING - UPPER BODY

ORDER SIZE	X SMALL		SMALL		MEDIUM		LARGE		X LARGE		XX LARGE		XXX LARGE	
	INCHES	CM'S	INCHES	CM'S	INCHES	CM'S	INCHES	CM'S	INCHES	CM'S	INCHES	CM'S	INCHES	CM'S
CHEST	32-34	81-86	35-37	89-94	38-40	97-102	41-43	104-109	44-46	112-117	47-49	119-125	50-52	127-132
NECK	13 1/2 -14	34-36	14 1/2 -15	37-38	15 1/2 -16	39-41	16 1/2 -17	42-43	17 1/2 -18	44-46	18 1/2 -19	47-48	19 1/2 - 20	49-51

## SIZING - LOWER BODY

ORDER SIZE	X SMALL		SMALL		MEDIUM		LARGE		X LARGE		XX LARGE		XXX LARGE	
	INCHES	CM'S	INCHES	CM'S	INCHES	CM'S	INCHES	CM'S	INCHES	CM'S	INCHES	CM'S	INCHES	CM'S
WAIST	27-28	69-71	29-31	73-78	32-34	82 1/2 -87 1/2	35-37	90-94	38-40	96 1/2 -101 1/2	41-43	104-109	44-46	112-117

## WOMENSWEAR FIT GUIDE

Please follow our How to Measure instructions and our clothing Size Guides below to find out the correct size to order. Our fits will vary in size depending on the style, cut and fabric. As our unisex product is generously cut, we recommend you follow your bust size as an accurate guide .

### HOW TO MEASURE

All body measurements should be taken standing in a relaxed posture, without clothing and with the tape measure held comfortably around the body.

#### CHEST

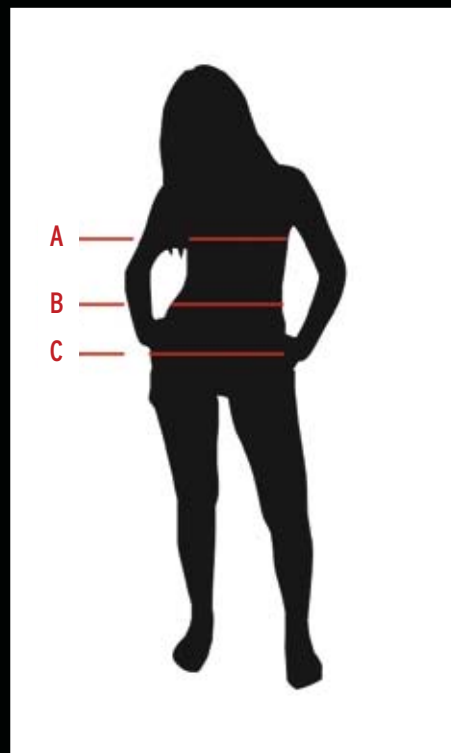
Measure across the fullest part of the bust with the tape measure held comfortably under the arms and over the shoulder blades.

#### WAIST

Measure around the natural waist, with the tape measure held level around the body.

#### HIPS

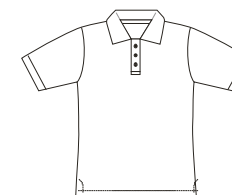
Measure around the fullest part of the bottom, which is approximately 8" (20cm) below the natural waist position.



#### LADIES FEMININE FIT



#### LADIES REGULAR FIT



## WOMENSWEAR SIZING

ORDER SIZE	8		10		12		14		16		18		20	
	INCHES	CM'S	INCHES	CM'S	INCHES	CM'S	INCHES	CM'S	INCHES	CM'S	INCHES	CM'S	INCHES	CM'S
BUST	32 1/4	82	34	86	36	91	37 3/4	96	39 3/4	101	41 3/4	106	44	112
WAIST	25 1/2	65	27 1/4	69	29 1/4	74	31 1/4	79	33 1/4	84	35	89	37 1/2	95
HIPS	35 1/2	90	37	94	39	99	41	104	43	109	45	114	47 1/2	120

## WOMENSWEAR SIZING

ORDER SIZE	SMALL		MEDIUM		LARGE		X-LARGE	
	INCHES	CM'S	INCHES	CM'S	INCHES	CM'S	INCHES	CM'S
BUST	32 1/2 -34	82-86	34 1/4 -37 3/4	87-96	38-41 3/4	97-106	UPTO 44	UPTO 112
WAIST	25 1/2 -27 1/4	65-69	27 1/2 -31 1/4	70-79	31 1/2 -35	80-89	UPTO 37 1/2	UPTO 95
HIPS	35 1/2 -37	90-94	37 1/4 -41	95-104	41 1/4 -45	105-114	UPTO 47 1/2	UPTO 120

## YOUTH FIT GUIDE

Our younger clothing is unisex and dual sized, the garments are loosely cut and will fit comfortably up to the larger of the specified ages. We recommend you use height, rather than age, as a more accurate guide for selecting the correct size.

## HOW TO MEASURE

All body measurements should be taken standing in a relaxed posture, without clothing and with the tape measure held comfortably around the body.

## HEIGHT

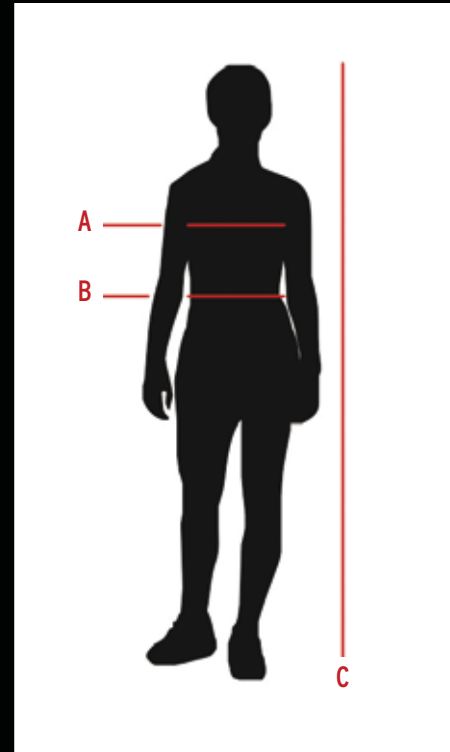
Measure from the top of the head to the floor with feet flat on the ground and without shoes.

## CHEST

Measure the fullest part of the chest with the tape measure under the armpits and held level around the body.

## WAIST

Measure around the natural waistline with the tape measure held level around the body. The natural waist is the narrowest point above the hip bone.



PLEASE CONTACT MKK FOR MENS  
TIGHT FIT SIZE GUIDE

## YOUTH SIZING

ORDER SIZE	3-4 YRS		5-6 YRS		7-8 YRS		9-10 YRS		11-12 YRS	
	INCHES	CM'S	INCHES	CM'S	INCHES	CM'S	INCHES	CM'S	INCHES	CM'S
HEIGHT	38-41	98-104	43-46	110-116	48-50	122-128	53-55	134-140	57 1/2-57	146-152
CHEST	21 1/2 -22 1/2	55-57	23-24	59-61	25 -26 1/2	63-67	27-28 1/2	69-72	29 1/2 -30 3/4	75-78
WAIST	20 3/4 -21 1/4	53-54	21 1/2 -22 1/2	55-57	22 3/4 -23 1/2	58-60	24-25	61-64	25 1/2 -26 3/4	65-68



### INFINITY COLOUR

The infinity colour wheel represents the infinite colours available when choosing to sublimite a garment. You have complete freedom to use any colour you desire in the design of your teamwear.

### SEMI BESPOKE COLOUR

Our Semi Bespoke Option is a way of combining the best of both - stock kit that is available immediately but with the bonus of being able to personalise it with an injection of your teams colour. The design possibilities are infinite - we can add flashes, spots, stripes, names and numbers to suit your style and needs.

There is an exciting range of colours to choose from and some colours will also provide an added safety feature - our neon brights are a brilliant way of being seen and keeping safe when leaving training.



## HOCKEY KIT (BESPOKE)

### CUT & SEWN HOCKEY SHIRTS & VESTS (BRIDGE, MAGMA, WAVE)

MKK's Hockey shirts and vests are available in 2 technical fabrics - IsoTek and IntaLok (Please see fabric descriptions for further information on the content and of each fabric) All fabrics will enhance comfort and performance but vary slightly in price to suit your budget. Men's and woman's tops can be customised to suit your teams preferences, and with a variety of designs, sleeve and collars options, piping and of course colours there are endless combinations to choose from. All garments can be embellished with logos, sponsors, and player names and numbers as desired.

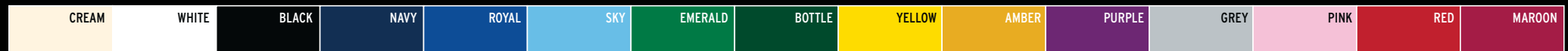
### CUT & SEWN HOCKEY SHORTS & SKORTS (BRIDGE, SHIELD)

MKK's Hockey Shorts are available in 4 technical fabrics - IsoTek, IsoPro, IntaLok and Microfibre. MKK's Hockey Skorts are available in 3 technical fabrics - IsoTek, VaporTek and LyTek (Please see fabric descriptions for further information on the content of each fabric) Skorts can have a combination of fabrics to enhance comfort and shorts are available in 2 leg lengths. Shorts and Skorts can be finished to match or contrast with your Hockey Shirt or Vest.

### HOCKEY SOCKS

Our Hockey Socks are luxuriously soft and comfortable with added support in the foot arch and a tighter band at the top to prevent slipping. With 2 designs Tophat Tri band and TopHat the colours can be adjusted to match your kit. To further personalise your socks you can also add text

## COLOURS



### DYO HOCKEY VEST/SHIRT (SUBLIMATED PRINTING)

If you would like further freedom for individuality then our DYO Hockey Shirts & Vests are the perfect blank canvas for creativity. Any design can be sublimated onto your chosen garment. This DYO option is great for Tour Kit when there are fewer restrictions on design.

### DYO HOCKEY SHORTS/SKORTS (SUBLIMATED PRINTING)

As with the Hockey tops there is also the option to be creative with our DYO Shorts or Skorts. With an infinite palette of colours to choose from you can design your own striking and individual kit.



**BRIDGE HOCKEY SHIRT**



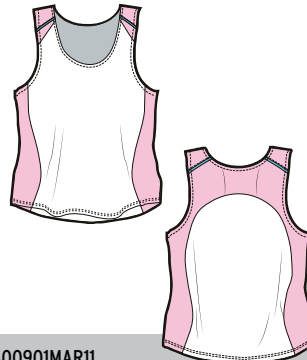
HS00901BRR11

**BRIDGE LADIES HOCKEY SHIRT**



HS02810BRF11

**MAGMA HOCKEY VEST**



HS00901MAR11

**WAVE HOCKEY SHIRT**



HS02806WAL04

**DYO HOCKEY VEST**



HS02806DYR04

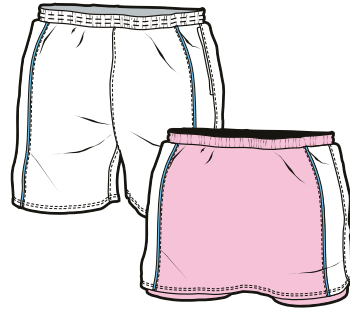
**BRIDGE HOCKEY SHORTS**



**BRIDGE HOCKEY SKORT**



**SHIELD HOCKEY SHORTS & SKORT**

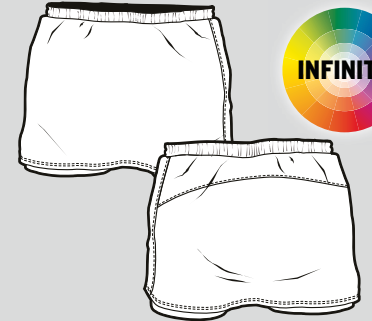


**TOPHAT/TRI BAND HOCKEY SOCKS**



HR01204SHA00

**DYO SHORTS & SKORT**



## MKK COLOURED KIT (STOCK/SEMI BESPOKE OPTION)

### GRAVITY SPORTS SHIRT

These shirts are hardworking and multi-tasking! Available in a variety of colour ways - Red, Sky, Yellow, Royal Blue & Green - all with Navy panels. They are constructed using 2 technical fabrics that offer moisture wicking, breathable properties. They not only look great but perform and wash well. The Gravity Shirt can be worn for training or playing and is not sport specific. Features include an open V Neck collar and large IsoTek panel at the back.

### GRAVITY SPORTS SHORTS

MKK Gravity Sports Shorts are available in Navy Blue and made from IntaLok, with a drawstring at the waist. They can be worn for training or playing and are the matching bottom half to the Gravity Sports Shirt.

#### GRAVITY SHIRT



SS2330IGRR03

#### GRAVITY SHIRT



SS2330IGRR03

#### GRAVITY SHIRT



SS2330IGRR03

#### GRAVITY SHIRT



SS2330IGRR03

#### GRAVITY SHIRT



SS2330IGRR03

#### GRAVITY SHORTS



SH02812GRR00



#### SEMI BESPOKE & FLEX COLOUR OPTION

Our Semi Bespoke & Flex Colour Option is a way of combining the best of both - stock kit that is available immediately but with the bonus of being able to personalise it with an injection of your teams colour. The design possibilities are infinite - we can add flashes, spots, stripes, names and numbers to suit your style and needs.

There is an exciting range of colours to choose from and some colours will also provide an added safety feature - Our neon brights are a brilliant way of being seen and keeping safe when leaving training.

## MKK TRAINING KIT (STOCK/SEMI BESPOKE)

### QUANTUM TRAINING TEE SHIRT

MKK's Training Tee Shirt is manufactured using Poly IntaLok - this fabric has stretch properties and is soft and comfortable whilst providing moisture wicking properties. Features include a round neck and rear draped hem.

### QUANTUM TRACK TOP

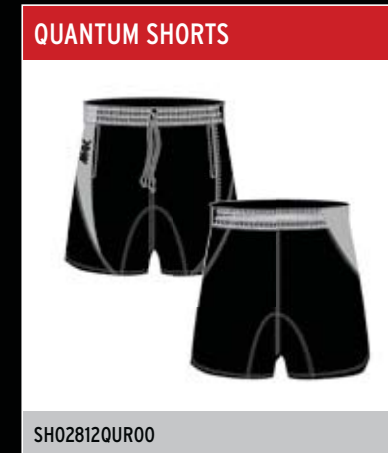
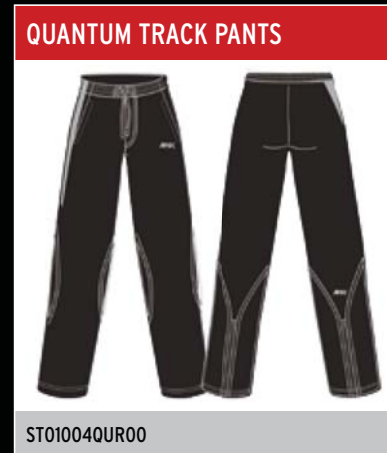
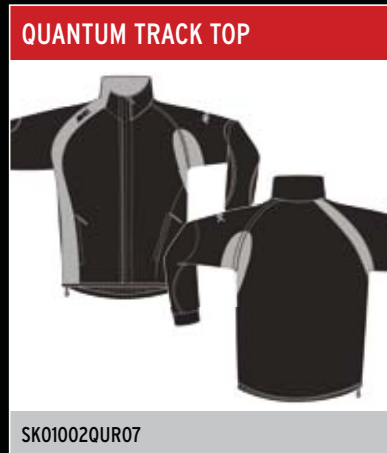
The MKK Quantum Full Zip Track Top is lightweight and breathable. Features include an outer Microfibre shell, with shock cords on each hip and zipped pockets.

### QUANTUM TRACK PANT

MKK's lined Microfibre Track Pants are unique in design with an open hem and a mid-calf length zip to the rear of the leg. Other features include an elasticated drawstring waist and zipped pockets.

### QUANTUM SHORTS

Quantum Shorts can be worn for training or playing, and they feature an elasticated drawstring waist and a flexible panel to enhance movement.



### SEMI BESPOKE COLOUR OPTION

WHITE	BLACK	BORDEAUX	GREY	LIGHT BLUE	ROYAL BLUE	BEIGE	GREEN	TURQUOISE	LEMON YELLOW	RED	YELLOW	ORANGE	NAVY	PURPLE
BROWN	METALLIC SILVER	METALLIC GOLD	NEON PINK	NEON GREEN	NEON YELLOW	NEON ORANGE								



## MKK STOCK TRAINING KIT (STOCK/SEMI BESPOKE)

### QUANTUM HOODIE

The Quantum Hoodie features a lined hood, ribbed hem and cuffs with a Kangaroo pocket at the front. Manufactured using cotton fleece, it is soft and warm! Other features include an adjustable drawstring and elasticated waistband.

#### RAIN JACKET



SK01102QUR07

#### HOODIE



SJ00802QUR10

### QUANTUM RAIN JACKET

The MKK Full Zip Rain Jacket is lightweight and water resistant. Features include an outer coated Ripstop shell, side zip pockets, elasticated shock cords at the waist and a hidden pocket inside the left chest. This Rain Jacket looks great and is the final layer in this range and offers protection from the elements.



#### SEMI BESPOKE OPTION

Our Semi Bespoke Option is a way of combining the best of both - stock kit that is available immediately but with the bonus of being able to personalise it with an injection of your teams colour. The design possibilities are infinite - we can add flashes, spots, stripes, names and numbers to suit your style and needs.

There is an exciting range of colours to choose from and some colours will also provide an added safety feature - our neon brights are a brilliant way of being seen and keeping safe when leaving training.



## TERMINOLOGY EXPLAINED!

Understanding how your kit is made and embellished can be really helpful when considering which choice to make when ordering new Teamwear. MKK use three techniques which are referred to when describing the garment design, so to give you a bit of background information on what each term means to you, please see below.

## CUT & SEWN

The term 'Cut & Sewn' in the context of sports clothing refers to how the garment is constructed with blocks of panelling to create the designs. Over the years we have developed and refined our palette of stock colours and range of fabrics to offer the most popular and technically effective choices. Each of our Cut & Sewn designs are bespoke - this means colours, fabrics, collars, piping and even stitching can be changed to suit. If you require something a little different that is not available in the stock palette you may want to consider a sublimation printed garment where there are no limitations.

## SUBLIMATION

'Sublimation' refers to the process used to design your Teamwear. It is still made in the same way, ie: Cut & Sewn together, however there is little or no panelling detail and the garment is essentially a blank canvas. Sublimation printing is the process by which coloured dye is transferred onto a white fabric by a heat process. This process enables almost any design to be produced with superb depth of colour, clarity, definition and as the colour is now an integral part of the fabric it doesn't fade, crack or peel, which means it wears and washes very well too. The design possibilities are completely endless with the ability to shade using an infinite colour palette - Sublimation offers complete freedom when designing your new kit.

## HEAT PRESS

Our Semi Bespoke Teamwear range can be personalised by adding a hint of your own style. There is an exciting colour palette to choose from and a variety of different designs can be added to any garment using the heat press process. As this process is carried out In-house, by hand, each design can be accurately applied to a specific area of the garment. The heat press process is also used for additional detail adding names, numbers and logo's.

### COLLAR OPTIONS



POLO



VEST



V-NECK



## FABRICS

MKK know that Teamwear has to be comfortable, durable and look great. To ensure optimum performance on the field we choose technical fabrics that wear and play well. MKK has spent extensive time researching, testing and refining our range of fabrics. We have listened to our customers needs and feedback and feel our high quality technical fabrics stand up to the test.

Our technical Teamwear is available in multiple fabrics in order to suit all budgets. Often, there is a combination of 2 or 3 fabrics together in one garment. Below are some of the core fabrics referred to in this brochure and a description of the content and its properties.

### ISOTEK

Content: 160g Polyester Mesh

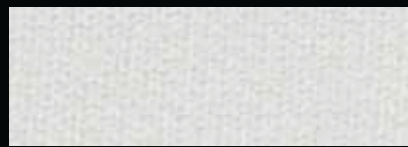
IsoTek is a breathable fabric that is ideal for all high performance sports. The fabric structure is designed to keep the individuals body cool and dry. Sublimation printing on this fabric can be used to create the most intricate designs without using the classic cut and sewn panel and piping combinations.



### INTALOK

Content: 180g Polyester Pique - Quick Dry

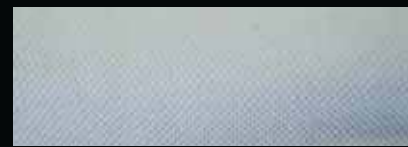
IntaLok is a performance weight polyester fabric with a luxury smooth and soft handle. This fabric is ideal for all sports which require a fine fabric that will maintain the wearer's body temperature and wick moisture away from their skin. It has stretch properties which can provide a closer fit if required.



### ISOPRO

Content: 180g Polyester Tricot

IsoPro is a durable hard wearing sports material with a super-soft lining that enhances comfort and movement. The tricot structure of this polyester material will wick moisture away from the body keeping the wearer cool and dry under pressure.



### VAPORTEK

Content: 93% Polyester, 7% Spandex

VaporTek is a unique Sublimated fabric which has been developed to embrace body movement whilst providing durability. The fabric is ideal for tight fit as the yarns and fibres compliment this style. VaporTek keeps you cool even in the hottest of battles.



### LYTEK

Content: 82% Nylon, 18% Spandex

LyTek has a high percentage of Spandex which allows for unhindered dynamic movement. The key features keeps the athlete cool and dry. The high amount of flexibility within the fabric allows the garment to be tight fitting. Please note that this fabric is not suitable for Sublimation



### MICROMESH

MicroMesh is a fine, soft and stretchy fabric.

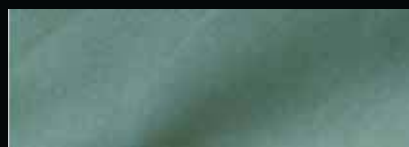
It's porous structure allows airflow in and moisture out. This is an excellent fabric when used as a panel situated near areas of perspiration.



### MICROFIBRE

Content: Polyester Microfibre

This finely woven peach finish fabric is soft and comfortable to wear. It's durability and water repellent properties make it a great choice for tracksuits and shorts



### COTTON FLEECE

Content: 60% Cotton 40% Polyester Fleece

This classic sweatshirt fabric is fleece lined for comfort and insulation. The brushed cotton surface has a soft handle and matt finish.



### RIPSTOP

Content: 100% Nylon Ripstop

Ripstop is 100% Nylon. It is a tough, durable fabric with a tight weave. Ripstop is water resistant but also allows the body to breathe.





MKK SPORTS LTD, THE COACH HOUSE, 5B COMMERCIAL ROAD  
EASTBOURNE, EAST SUSSEX, BN21 3XE, UNITED KINGDOM

TELEPHONE: +44 (0)1323 810040

FAX: +44 (0)1323 870 011 6358

EMAIL: [INFO@MKKSPORTS.CO.UK](mailto:INFO@MKKSPORTS.CO.UK)

WEBSITE: [WWW.MKKSPORTS.CO.UK](http://WWW.MKKSPORTS.CO.UK)

